



THE HELP GROUP'S SUMMER CAMPS AND PROGRAMS

FOR CHILDREN, TEENS AND YOUNG
ADULTS WITH AUTISM SPECTRUM
DISORDER AND OTHER SPECIAL NEEDS



SHERMAN OAKS
CULVER CITY

The Help
Group

SCAN HERE
to access our website
with your smartphone.



VILLAGE GLEN CAMP

READY, SET, PLAY!



VILLAGE GLEN DAY CAMP is a specialized social skills camp developed for children between the ages of 3 and 13 with learning, language, attention, social and/or sensory challenges. Campers enjoy a fun, creative, and enriching camp program specifically designed to promote social skills development and foster new friendships.

Experienced Help Group therapists and counselors incorporate evidence-based practices into the daily schedule, allowing campers to develop core strengths in:

- Communication
- Mindfulness
- Decision Making
- Problem Solving
- Organization
- Frustration Tolerance
- Anger Management
- Social / Emotional development

Siblings are welcome to enroll in our inclusive community.

An exciting and well-rounded schedule of summer activities includes music, art, drama, nature, science, robotics, sports, games, entertainment, water play, trips, special events, and more!

SIX, ONE-WEEK SESSIONS

June 15-19 | June 22-26
June 29- July 2* | August 3-7
August 10-14 | August 17-20*

9:00am-2:30pm

COST PER WEEK

PRESCHOOL (AGES 3-5)
5 day (M-F) \$500
3 day (M, W, F) \$300
*Specific 4 day weeks \$400

AGES 6-13
5 day (M-F) \$450
3 day (M, W, F) \$275
*Specific 4 day weeks \$365

LOCATIONS

THE HELP GROUP
Sherman Oaks Campus
13164 Burbank Blvd.
Sherman Oaks, CA 91401

Culver City Campus
4160 Grand View Blvd.
Culver City, CA 90066



CAMP SUNSHINE

ENGAGE,
EXPERIENCE,
EXPLORE!



SIX, ONE-WEEK SESSIONS

June 15-19 | June 22-26
June 29- July 2* | August 3-7
August 10-14 | August 17-20*

9:00am-2:00pm

COST PER WEEK

5 day (M-F) \$550
3 day (M, W, F) \$330
2 day (T, TH) \$220
*Specific 4 day weeks \$440

LOCATIONS

THE HELP GROUP

Sherman Oaks Campus
13164 Burbank Blvd.
Sherman Oaks, CA 91401

Culver City Campus
4160 Grand View Blvd.
Culver City, CA 90066

CAMP SUNSHINE is a popular program developed for children between the ages of 3 and 21 who have moderate to severe developmental disabilities. Our multidisciplinary team of professionals oversee a creative summer camp designed to help each child reach his or her highest potential and develop unique strengths and abilities. We group campers by age and ability and maintain a 1:3 counselor to camper ratio to maximize individual attention.

CAMP HIGHLIGHTS: Our campers enjoy fun and enriching activities in a safe and nurturing environment. Campers build confidence and self-esteem, practice important life skills, and take steps toward independence while making new friends and having fun. Our daily schedule of thematic activities includes:

SPORTS
MUSIC
GAMES
ART
NATURE

DRAMA
WATER PLAY
ENTERTAINMENT
SPECIAL EVENTS

FIELD TRIPS
COOKING
CONTESTS
AND MUCH MORE!



**NATURE,
ADVENTURE,
FUN!**



at TUMBLEWEED Day Camp Site

CAMP DISCOVERY is a ONE WEEK ONLY day camp adventure for children ages 4 -13 with mild to moderate special needs. An exceptional staff team helps young campers to safely explore, experience and enjoy a wide variety of fun, traditional outdoor camp and nature activities

Tumbleweed Day Camp site is a wonderful natural setting and offers our campers a multitude of activities and experiences including:

ARTS & CRAFTS
MUSIC
DRAMA
CLIMBING STRUCTURES
FIELD GAMES
HIKING

NATURE ACTIVITIES
THEME DAYS
SPORTS GAMES
CONTESTS
& MUCH MORE!


ONE-WEEK SESSION ONLY
Aug 17-21

9:00am-3:00pm

COST PER WEEK
5 day (M-F) \$660

LOCATION
TUMBLEWEED DAY CAMP
1024 Hanley Ave,
Los Angeles, CA 90049

Bus Transportation from
Sherman Oaks and Culver City
may be available



Science
Technology
Engineering
Art
Math

S T E A M

SUMMER PROGRAM

Village Glen Elementary, Middle,
and High Schools are moving

FULL
S T E A M
AHEAD!
THIS SUMMER!

**ONE, FOUR-WEEK
SESSION ONLY**

July 6-31

9:00am-1:30pm

LOCATION
VILLAGE GLEN SCHOOL
13130 Burbank Blvd.
Sherman Oaks, CA 91401

**FOR MORE INFORMATION
OR TO REGISTER
PLEASE VISIT**

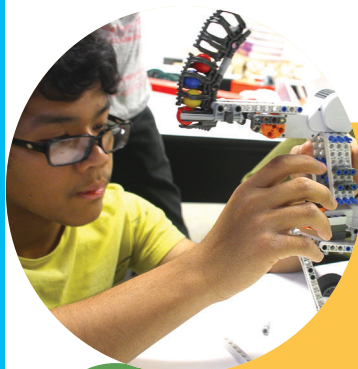
www.villageglen.org or contact
Ellis Cransnow | 818.779.5142

In addition to traditional academics, exciting activities are planned that will 'transport' your child's imagination through **Science, Technology, Engineering, Art, and Math**. Lessons will be hands-on, project-based, creative, engaging and fun! Serving students with learning, language, attention, executive functioning, social skills and/or sensory challenges such as high functioning autism spectrum disorder.

**ELEMENTARY SCHOOL
PROGRAM HIGHLIGHTS:**
BOTS FOR TOTS!
SCIENCE-JUNK BOX BUILD OFF
COMPUTERS

**MIDDLE SCHOOL
PROGRAM HIGHLIGHTS:**
BEGINNING ROBOTICS
COMPUTERS
SCIENCE-BREAKING BALSA

HIGH SCHOOL PROGRAM HIGHLIGHTS:
INNOVATION
ENTREPRENEURSHIP
CAHSEE PREP
SCRIPT TO SCREEN
ROBOTICS
DESIGNING FOR SUCCESS
WEB DESIGN AND DEVELOPMENT
3D MODELING AND PAINTING
CARTOON ANIMATION
HEALTH AND FITNESS
MUSIC PRODUCTION
ARDUINO WORKSHOP
DRIVER EDUCATION



TEENS *on the go!*



A unique social skills program designed especially for teens ages 13-18 with learning, language, attention, social and/or sensory challenges.

Led by highly trained Help Group therapists and staff, this special program features daily trips, activities and adventures with peers throughout Los Angeles.

CAMP HIGHLIGHTS:

JET PROPULSION LAB
WILDLIFE CENTERS
THEME PARK
INTERACTIVE TOURS
BOWLING
VIDEO ARCADES

FUN MUSEUMS
HOLLYWOOD ADVENTURES
MARINE STUDIES CENTERS
IMAX
ART WORKSHOPS
& MUCH MUCH MORE!

The program emphasizes fun and friendship-building activities and incorporates evidence-based practices to foster peer interaction and improve social skills.

FIVE, ONE-WEEK SESSIONS

June 15-19 | June 22-26
June 29 - July 2* | August 3-7
August 10-14

9:00am-3:00pm

COST PER WEEK

5 day (M-F) \$625
3 day (M, W, F) \$375

*There will be only 4 days of camp for a prorated rate of \$500 on the week of June 29th- July 2nd in observance of July 4th.

LOCATIONS

THE HELP GROUP

Sherman Oaks Campus 13164 Burbank Blvd. Sherman Oaks, CA 91401	Culver City Campus 4160 Grand View Blvd. Culver City, CA 90066
--	--

**2015
TRAVEL
CAMPS**

TEENS ON THE GO TRAVEL CAMPS

Professional Help Group staff lead these exciting trips that provide true bonding experiences for participants with memories and friendships to last a lifetime. Costs includes transportation, accommodations, meals, snacks, activity fees, and 24-hour staff supervision.



DISNEY WEEKEND HIGHLIGHTS

MEDIEVAL TIMES
DISNEYLAND
BEACH FUN
AND MORE!

DATES
JULY 24 TO JULY 26

COST
\$550
\$450 FOR DISNEY PASS HOLDERS

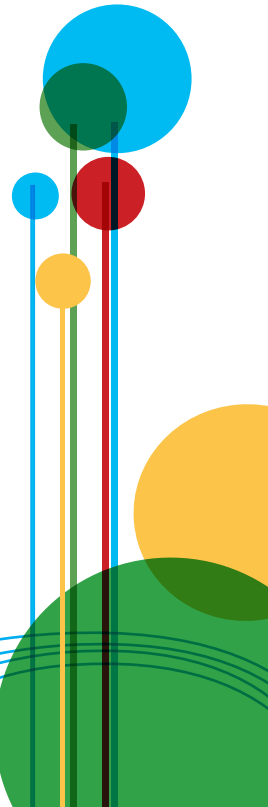


6 DAYS 5 NIGHTS DENVER ADVENTURE HIGHLIGHTS

COLORADO NATURAL WONDERS
DENVER & BOULDER CITY FUN
COOL MUSEUMS
AMUSEMENT PARK
TOURS
MUSIC
AND MUCH MORE!

DATES
AUG 16 TO AUG 21

COST
\$2000



PROGRAMS FOR YOUNG ADULTS

THE HELP GROUP'S
Advance LA

Preparing teens and young adults with unique challenges for a successful future

Summer Prep Program

June 14th - June 20th 2015

Advance LA's Summer Prep Program is a week long residential program for young people between the ages of 16 and 21 who are:

- Preparing for the transition to college
- Currently enrolled in college, but would benefit from additional practice in skills leading to academic success
- Exploring vocational options

COLLEGE PATH

- Navigating college campuses
- Study and organizational skills
- Accessing social and academic resources

VOCATIONAL PATH

- Vocational assessments
- Multi-day Internship placements
- Exploration of community job supports & vocational programs

COST

\$1495

Includes the following:

Full schedule of structured activities
6 nights in a college dorm
Meal plan
Evening social/recreational events

Located on the Campus of American Jewish University, Los Angeles

Please contact **JILL ROSENBERG**, Director
818.779.5327 or jrosenberg@thehelpgroup.org

2015 SUMMER Vocational Skills Training Program

Join other young adults for a highly enriching & fun skills based summer program focusing on the world of work...

Through individual as well as group activities, this program provides:

- Vocational assessment
- Development of core vocational skills
- Career exploration and exposure
- Job-seeking and work-placement skills training
- Site visits and on-the-job training experiences
- Social skills building

Please contact **HEATHER HUMPHREY**, Director of Vocational Services
818.779.5272 or humphrey@thehelpgroup.org

WEEKLY SESSIONS

June 22 - 26
COST \$450

June 29 - July 2
COST \$380

August 3 - 7
COST \$450

August 10 - 14
COST \$450

Purchase all 4 weeks for \$1375

LOCATION Sherman Oaks Campus
(Transportation from Culver City.)

A Day For Young Adults

Speed
FRIENDING

JOB HUNTING

EATING
» WELL «

ROBOTICS

SATURDAY, JULY 18TH
9:30a - 4:00p LUNCH INCLUDED
LOCATED AT

AJU 15600 MULHOLLAND DR.
LOS ANGELES, CA.

Please contact Tamika DeCambra
tdecambra@thehelpgroup.org | 818.779.5198

yoga

MUSIC

DATING
101

»»»
COLLEGE
success

stress
MANAGEMENT

ANIME



Early Bird
Registration
by May 18th
**15% OFF ALL
SUMMER
PROGRAMS**

The Help Group's **Kids Like Me** is the premier after school and camp program in Los Angeles for children and adolescents with autism spectrum disorder and other special needs. Participants enjoy after-school classes, clubs, camps, weekend social and family activities with kids who share similar challenges. **Kids Like Me** provides opportunities for children and teens to have fun, connect with others, learn new skills, make friends, and experience a sense of belonging. All programs are overseen by highly trained professionals and are designed to address specific age and ability levels.

Founded in 1975, The Help Group is the largest, most innovative and comprehensive nonprofit of its kind in the United States serving children with special needs related to autism spectrum disorder, learning disabilities, ADHD, developmental delays, abuse and emotional problems.

The Help Group's seven specialized day schools offer pre-K through high school programs for more than 1,400 students. Its broad range of mental health and therapy services, child abuse and residential programs extends its reach to more than 6,000 children and their families each year. With more 900 staff members, The Help Group's state-of-the-art schools and programs are located on six campuses in the Los Angeles area.

The Help Group is widely regarded for its high standards of excellence, unique scope and breadth of services. Through its public awareness, professional training and parent education programs and efforts at the state and national levels, The Help Group touches the lives of children with special needs across the country and in other parts of the world.

At the heart of its effort is the commitment to helping young people fulfill their potential to lead positive, productive and rewarding lives.



www.kidslikemela.org



www.thehelpgroup.com





Administrative Offices:
13130 Burbank Boulevard
Sherman Oaks, California 91401

Non-Profit Org.
U.S. POSTAGE
PAID
PERMIT NO. 718
Van Nuys

